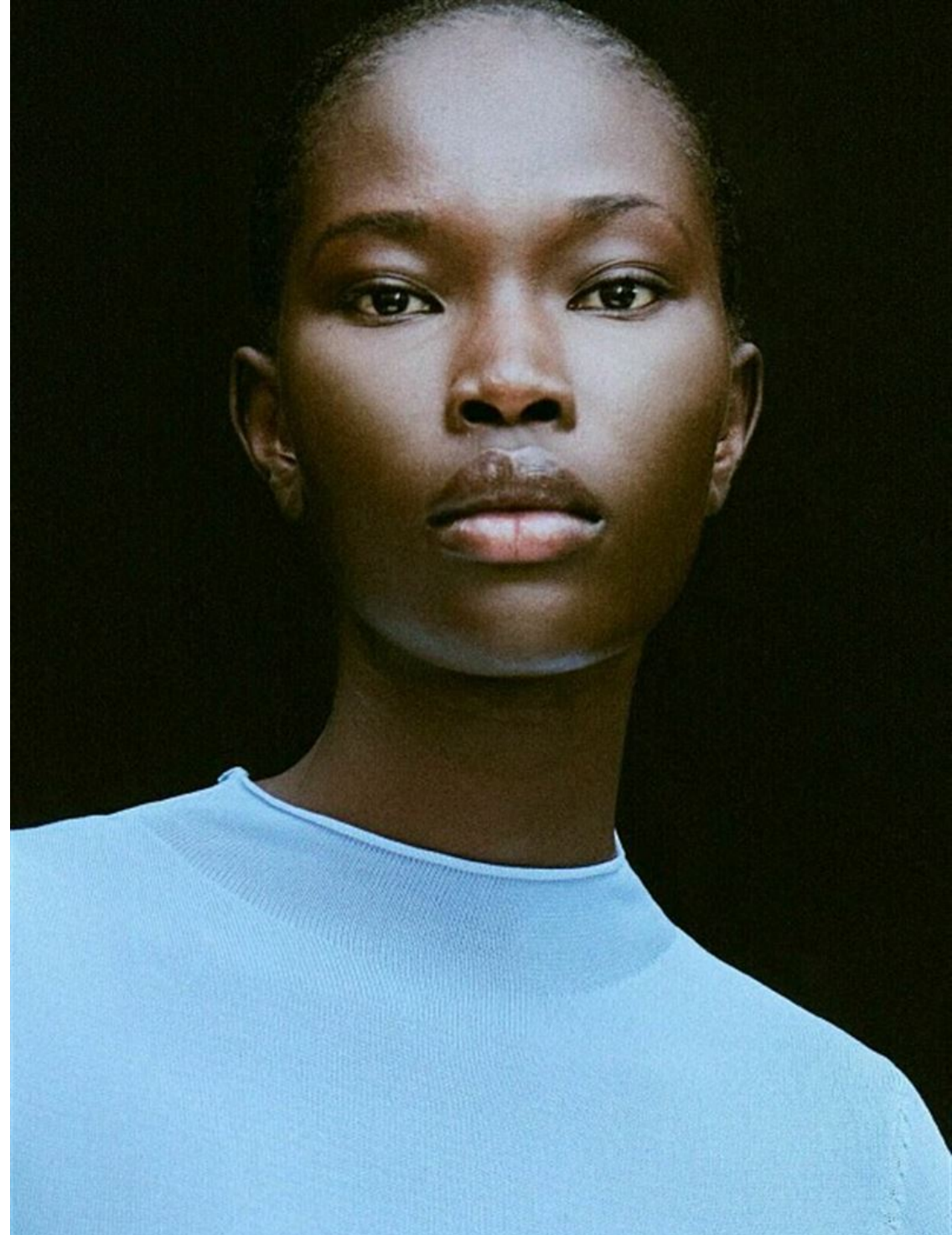


ADHEL BOL

HEIGHT	180 - 5' 11"
BUST	76 - 30"
WAIST	61 - 24"
HIPS	87 - 34"
SHOES	39 - 9
HAIR	black
EYES	black

@adhel_bol





ELLE



ELLE



*Robe à franges en dentelle de viscose
à manches longues et col montant, finition
métallique brillante et doublure ton
sur ton, boucles d'oreilles en métal doré,
et bottes en cuir, Fendi.*







A woman with braided hair is shown in profile, wearing a black, floor-length gown. The bodice features two large, ornate gold floral motifs with intricate detailing. The gown has a fitted silhouette and a subtle flare at the hem.

Alexander McQUEEN

A woman with braided hair is shown from the front, wearing a white, floor-length dress. The bodice is dominated by a large, vibrant red rose print. The dress has a simple, elegant cut with a slight flare at the hem. She is also wearing black high-heeled sandals.

Alexander McQUEEN











IMAGINE

Thomas Brodie-Sangster, Hervé Chandès,
Kudzanaï Chiurai, Lillith Stangenberg,
Jannis Niewöhner, Ashley Walters and more...



Adhel Bol by Niklas Hahn
body suit and jewelry CHANEL
swim cap Dead Lotus Couture



VOCS VUE

KOTO
BOLOFO
LIBENA
ROCHOVA





Perfect