

# ANA ELISA

<b>HEIGHT</b>	178 - 5' 10"
<b>BUST</b>	77 - 30"
<b>WAIST</b>	58 - 23"
<b>HIPS</b>	86 - 34"
<b>SHOES</b>	39 - 9
<b>HAIR</b>	brown
<b>EYES</b>	brown

@anae.brito















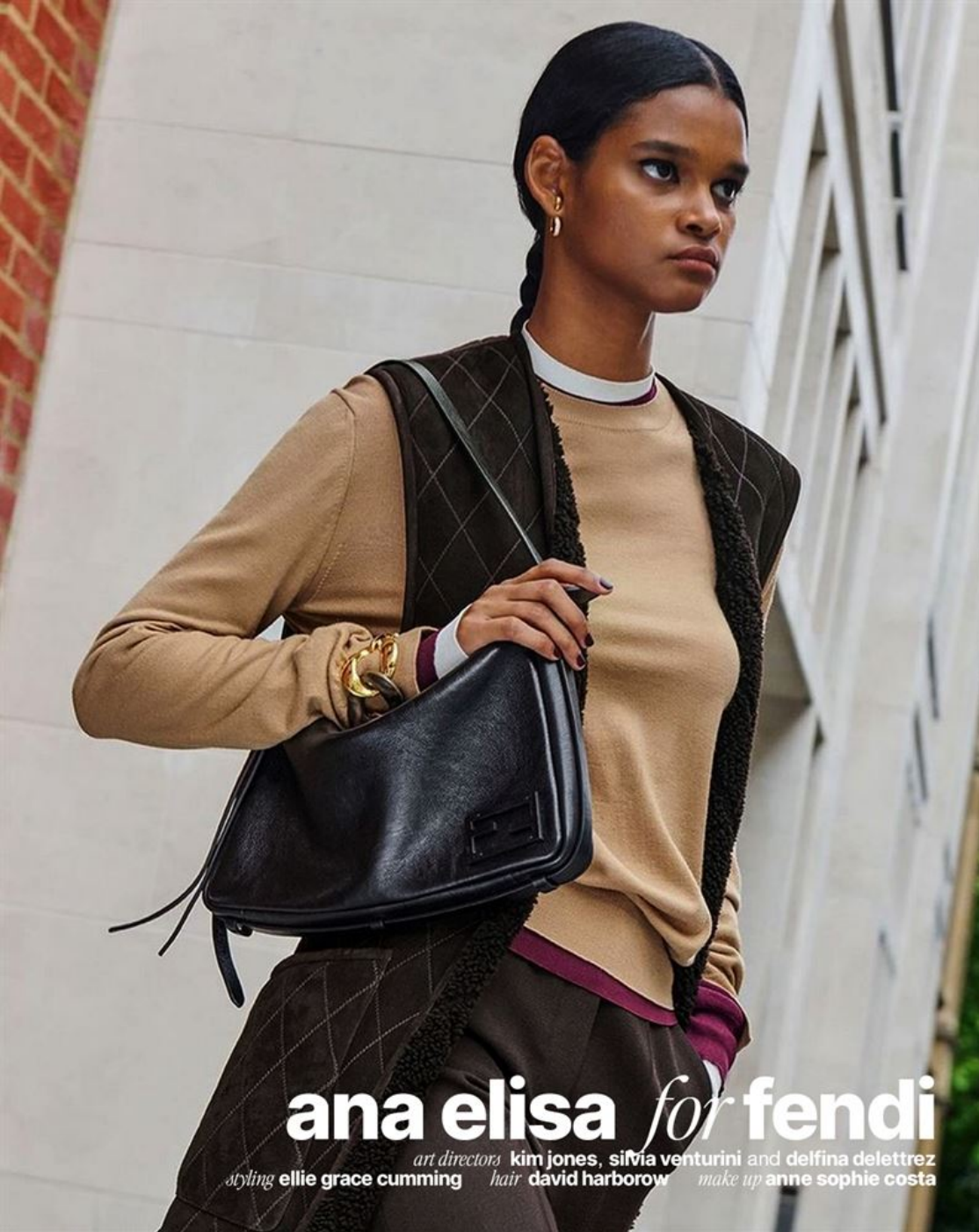






report





**ana elisa** *for* **fendi**

art directors **kim jones, sylvia venturini** and **delfina delettrez**  
styling **ellie grace cumming** hair **david harborow** make up **anne sophie costa**













**MIU MIU**  
UPCYCLED



